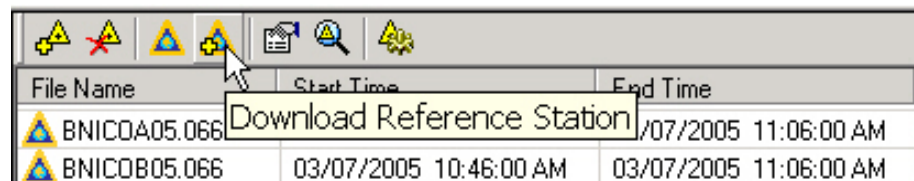


MobileMapper Office Tech Note: Adding a RINEX Provider

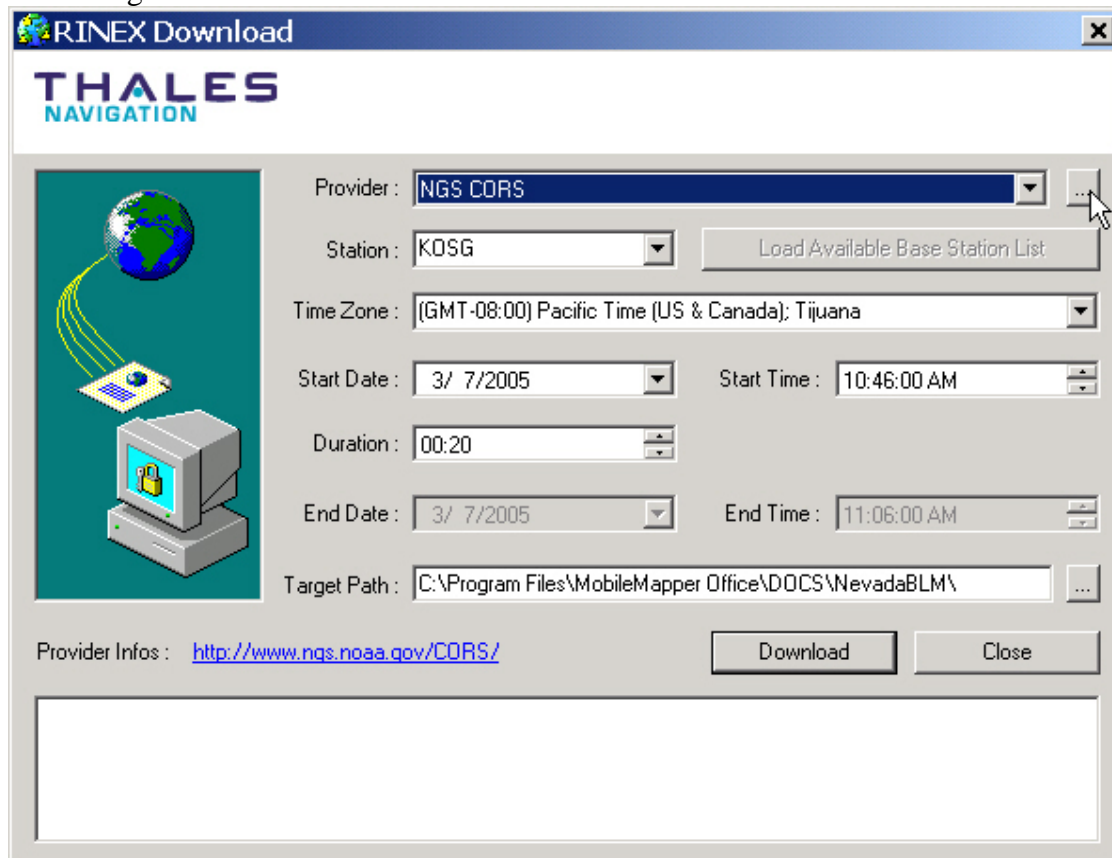
21 February 2007

There are three requirements for adding a RINEX provider in MobileMapper Office (MMO). First, the reference station data must be available as individual files listed on an ftp site. MMO cannot access data available from Worldwide Web pages, although it is possible to manually download such files for post-processing. Second, the data files must be named according to certain conventions. Third, the reference station data must be in RINEX 1 format. Although MMO can use either RINEX 1 or RINEX 2 data for differential correction, the RINEX Download utility currently supports only RINEX 1.

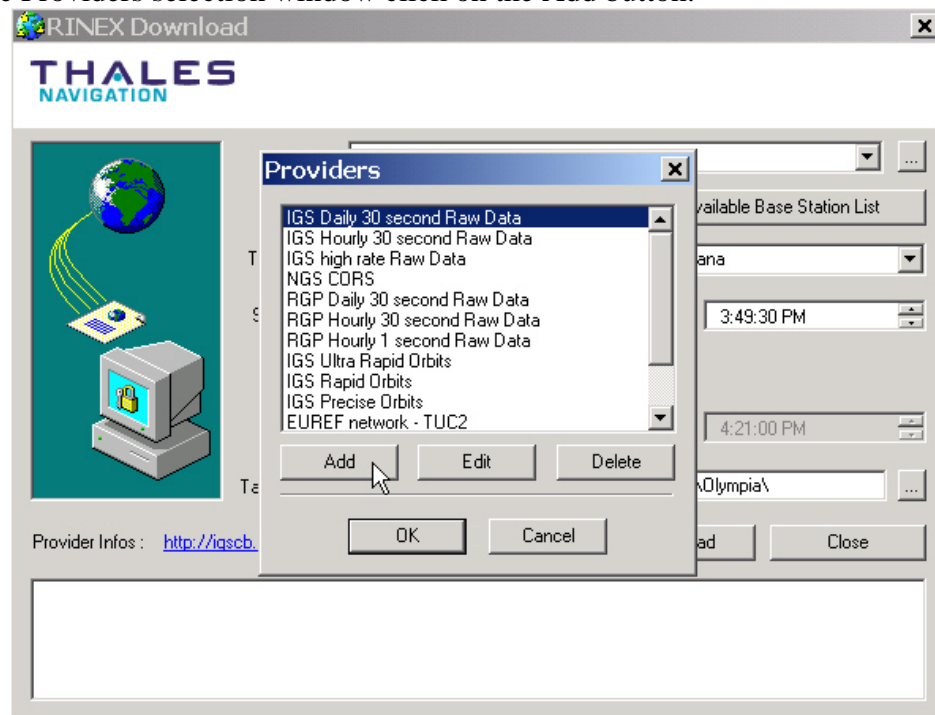
1. Click on the Download Reference Station icon on the Differential Correction tool bar.



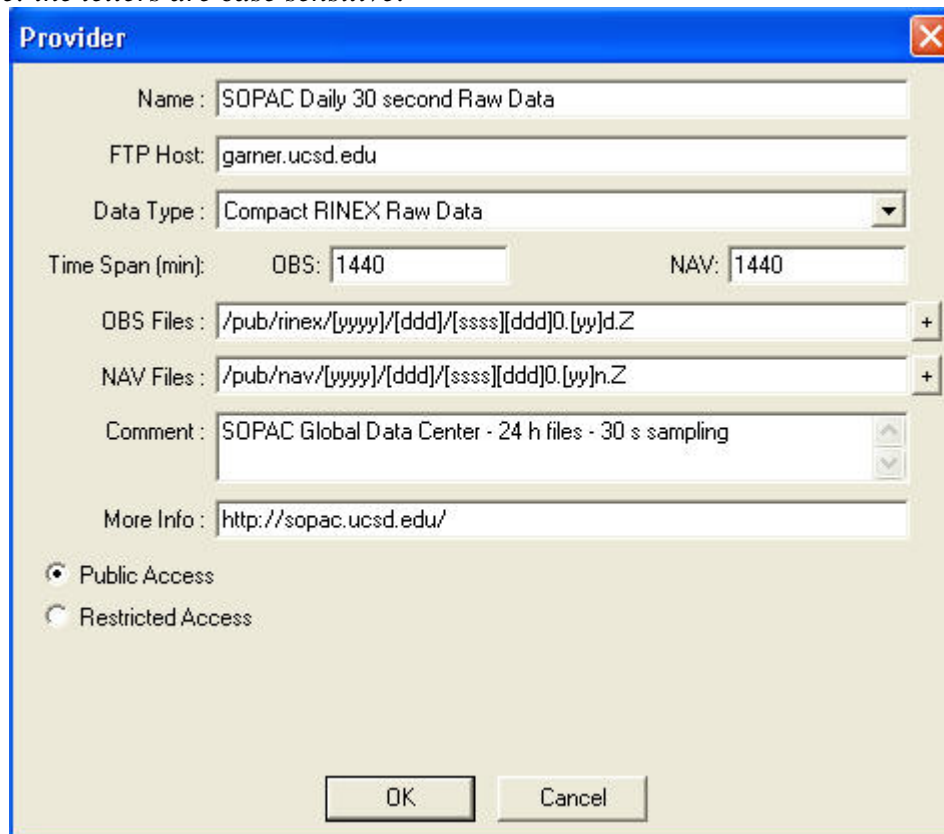
2. On the RINEX Download window, click on the small tab with three dots in it as seen in the diagram below.



- On the Providers selection window click on the Add button.



- Fill out the Provider Properties window with the information in the diagram below.
Note: the letters are case sensitive.

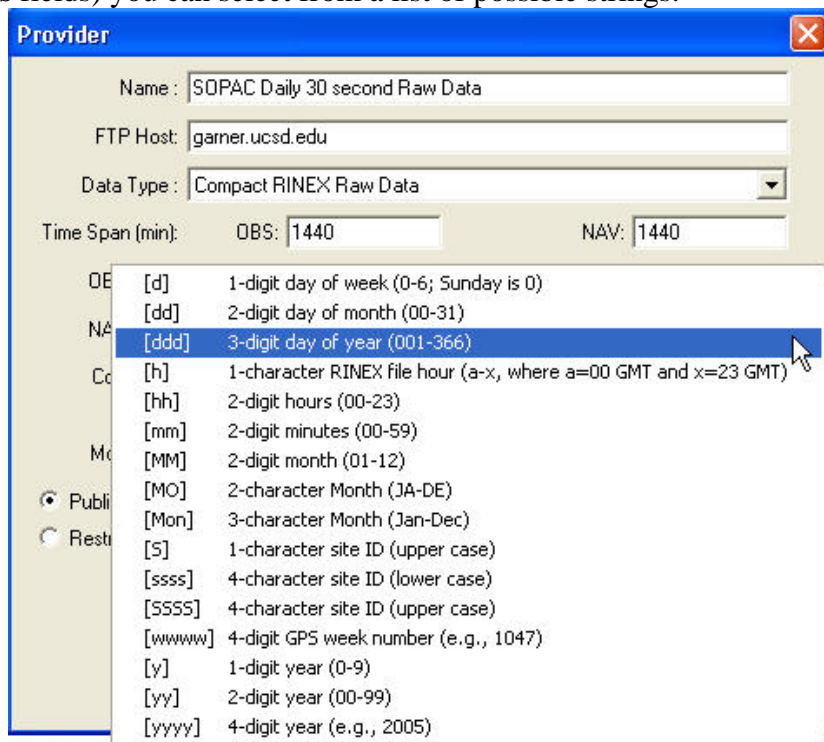


The screenshot shows the 'Provider' properties window with the following fields filled out:

- Name: SOPAC Daily 30 second Raw Data
- FTP Host: garner.ucsd.edu
- Data Type: Compact RINEX Raw Data
- Time Span (min): OBS: 1440, NAV: 1440
- OBS Files: /pub/rinex/[yyyy]/[ddd]/[ssss][ddd]0.[yy]d.Z
- NAV Files: /pub/nav/[yyyy]/[ddd]/[ssss][ddd]0.[yy]n.Z
- Comment: SOPAC Global Data Center - 24 h files - 30 s sampling
- More Info: http://sopac.ucsd.edu/

At the bottom, there are radio buttons for 'Public Access' (selected) and 'Restricted Access', and 'OK' and 'Cancel' buttons.

By clicking the button with the plus sign (located to the right of the **OBS Files** and **NAV Files** fields) you can select from a list of possible strings.



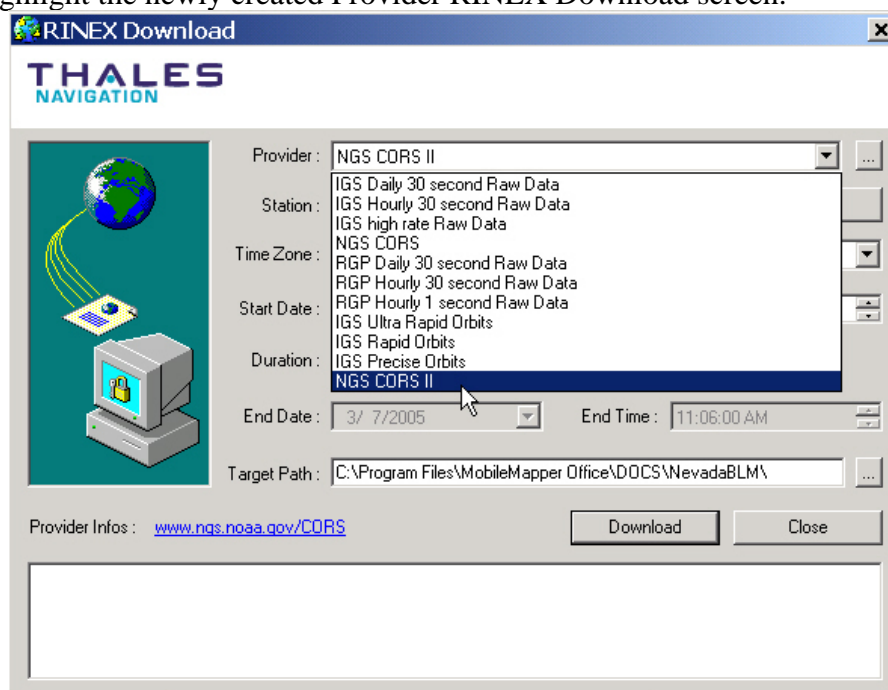
The Provider dialog box is shown with the following fields and a list of strings:

- Name: SOPAC Daily 30 second Raw Data
- FTP Host: garner.ucsd.edu
- Data Type: Compact RINEX Raw Data
- Time Span (min): OBS: 1440, NAV: 1440
- List of strings:
 - [d] 1-digit day of week (0-6; Sunday is 0)
 - [dd] 2-digit day of month (00-31)
 - [ddd] 3-digit day of year (001-366)
 - [h] 1-character RINEX file hour (a-x, where a=00 GMT and x=23 GMT)
 - [hh] 2-digit hours (00-23)
 - [mm] 2-digit minutes (00-59)
 - [MM] 2-digit month (01-12)
 - [MO] 2-character Month (JA-DE)
 - [Mon] 3-character Month (Jan-Dec)
 - [S] 1-character site ID (upper case)
 - [ssss] 4-character site ID (lower case)
 - [SSSS] 4-character site ID (upper case)
 - [www] 4-digit GPS week number (e.g., 1047)
 - [y] 1-digit year (0-9)
 - [yy] 2-digit year (00-99)
 - [yyyy] 4-digit year (e.g., 2005)

When you are done, click **OK** at the bottom of the Provider screen.

Note: if the OBS and NAV files are bundled in the same file on the Provider's ftp site, leave the NAV field blank.

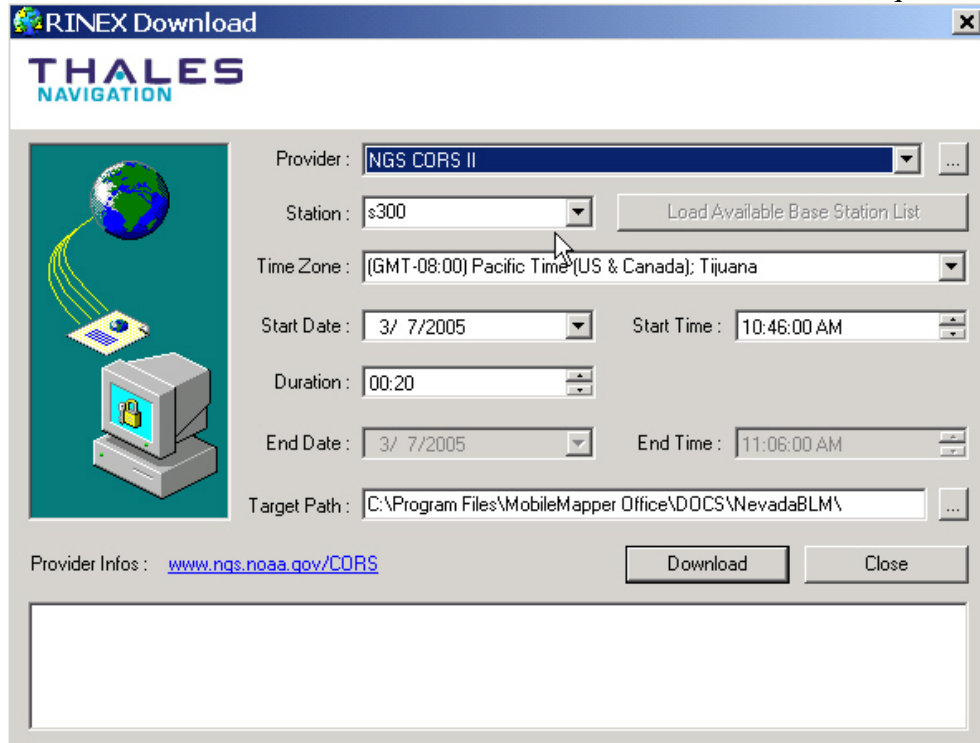
- Now highlight the newly created Provider RINEX Download screen.



The RINEX Download dialog box is shown with the following fields and options:

- Provider: NGS CORS II
- Station: IGS Daily 30 second Raw Data, IGS Hourly 30 second Raw Data, IGS high rate Raw Data, NGS CORS
- Time Zone: RGP Daily 30 second Raw Data, RGP Hourly 30 second Raw Data, RGP Hourly 1 second Raw Data
- Start Date: IGS Ultra Rapid Orbits, IGS Rapid Orbits, IGS Precise Orbits
- Duration: NGS CORS II
- End Date: 3/ 7/2005
- End Time: 11:06:00 AM
- Target Path: C:\Program Files\MobileMapper Office\DOCS\NevadaBLM\
- Provider Infos: www.ngs.noaa.gov/CORS
- Buttons: Download, Close

6. After you fill out the Provider info dialog box, click **OK**. Then you must also type in the station name in the **Station** field on the **RINEX Download** page (see below). You can then click the **Download** button and MMO will download the required files.



RINEX Download

THALES NAVIGATION

Provider : ...

Station :

Time Zone :

Start Date : Start Time :

Duration :

End Date : End Time :

Target Path : ...

Provider Infos : www.ngs.noaa.gov/CORS